

Amphibious Dredges

Submersible Dredging Pumps | Remote Controlled Dredges
Cable Dredgers | Amphibious Dredges




DRM Crawler multi-purpose dredge

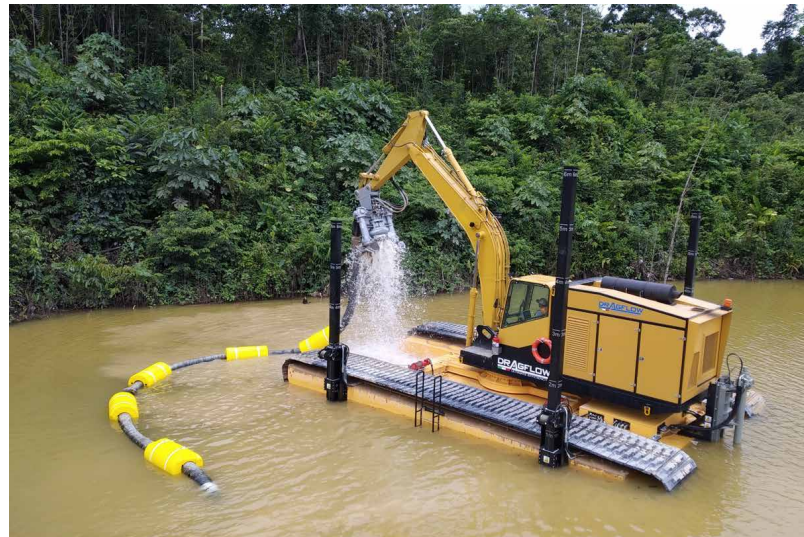
The DRM dredge series are multi-purpose machines that can work both on water and on land.

Designed to tackle projects where site conditions vary from very shallow to deeper areas and in projects where extreme mobility is important.

The DRM design provides the mobility of an amphibious excavator together with the stability of a dredger without side pontoons.

Main characteristics:

- Total mobility in both land and water
- System operated by a single operator
- Dredging depth up to 6.5m
- Capable of pumping up to 1000m³/h
- Possibility to use different hydraulic tool attachments
- Available with bucket up to 1,5 m³
- Packed and shipped in five 40ft containers for quick installation



Special Features

1. Hydraulic Power Units

Dragflow's Hydraulic Power Units are custom built to handle the requirements of our machines.

They can include a wide range of features:

- Completely customisable for additional tools
- Available with Diesel engines or electric motors to run the hydraulic system
- Sound proof Enclosure for reduced noise levels during operation
- Diesel engines available in TIER 4 FINAL STAGE V

2. Undercarriage tracks

The DRM tracks can be made in either steel or polymeric material. Additionally, they are joined by individual links that allow an easier maintenance and replacement, making the entire machine much more reliable.

3. Flotation Studies

Flotation studies were performed according to IACS regulations to obtain the perfect setup for the machine under these extreme conditions.



Amphibious Dredges

Submersible Dredging Pumps | Remote Controlled Dredges
 Cable Dredgers | Amphibious Dredges



DRM



Hydraulic Arm

- Precisely moves pump up and down
- Depth measuring sensors
- Possibility to install other hydraulic tools

Hydraulic Pack

- Sound proof canopy
- Diesel engine
- Closed hydraulic circuit
- Oil pump
- Completely customizable hydraulic circuits

Winches (x4)

- For moving the dredge
- Steel cables
- Optional propeller
- Stabilizer Spuds (x4)

Floater

- Two pontoons 11x2x1,5m with central floater for exceptional stability
- Small draft



Operator cabin

- Complete control panel
- Heating and air conditioning
- Ergonomic seat
- Safety equipment
- Equipment status
- Emergency stop controls



HPU

- The hydraulic thruster is driven from the operator cabin and drives the dredge independently without any connection to the shore.



Length.....11.5m
 Width.....7m
 Height.....4.5m
 Weight.....53 ton



TRANSPORT

Transportable in five containers 40'.
 Assembly operations takes as short as 8-10 hours



DIMENSIONS

Two (2) pontoons 11m x 2 m x 1.5 m with central floater

DRAFT

1.5 m



Type.....Diesel engine (265 kW/360HP)

Fuel Capacity.....1200 L

Emission Compliance.....EU STAGE III A



HY85/180

Max Capacity.....[m³/h] 1000

Max Head.....[m] 60

Discharge Diameter.....DN200

Max Solid Handling.....90 m

Amphibious Dredges

Submersible Dredging Pumps | Remote Controlled Dredges
Cable Dredgers | Amphibious Dredges

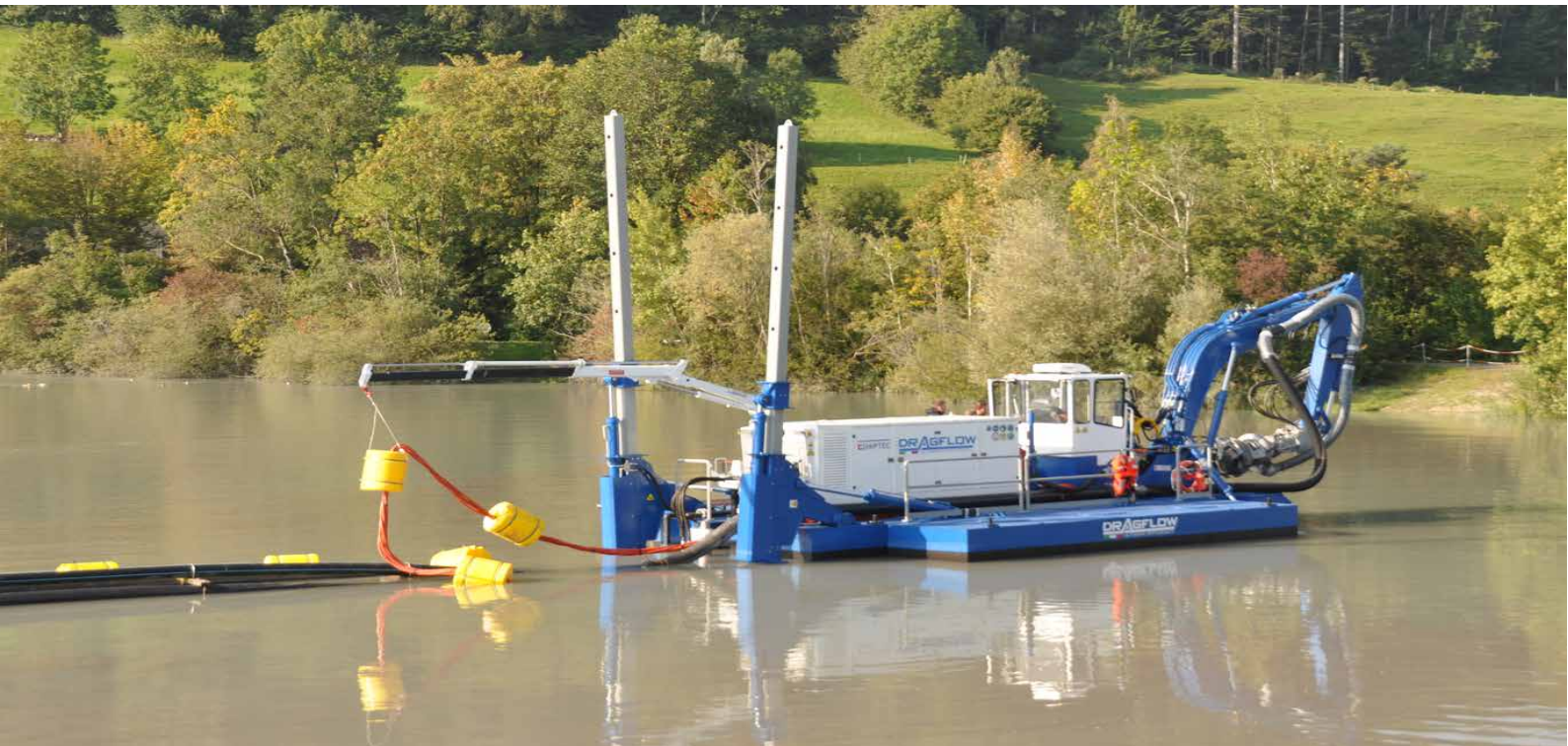


DRSP

Multi-purpose dredge

DRSP (Multi-purpose dredge) represents a step over on approach of dredging technique. The extreme mobility in any kind of swamp, together with the full floatability, allows to reach the most the most remote locations otherwise impossible to get with any other equipment.

Pumping capacity up to 600-800 m³/h with delivery distance up to 1500 meters or more can make possible to perform works with the highest productivity ever. The combination of such equipment with the DRAGFLOW dredging technology makes the DRSP unbeatable in terms of efficiency and durability.



Main Features

- Great stability and buoyancy in different water environments
- Independent propulsion system in both water and on land
- Dredge up to 6.5m of depth
- Interchangeable hydraulic tools

Amphibious Dredges

Submersible Dredging Pumps | Remote Controlled Dredges
Cable Dredgers | Amphibious Dredges



Main Arm

Max working depth 6,7m
Precisely moves pump up and down
Depth measuring sensors
Possibility to install other hydraulic tools

Power Pack

The hydraulic power pack can be based on electric motors or on diesel engines in compliance with the latest European emission standards.

Rear Stabilizers

Thanks to a max working depth of 7m, the rear stabilizers can anchor the dredge during the dredging operations.

Front Stabilizers

The stabilizers increase the lateral stability of the dredge during the movement of the arm.

Service crane

With its max extension of 6m, it can be used for several operations on the dredge.



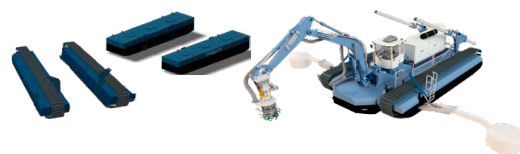
Operator cabin

- Complete control panel
- Heating and air conditioning
- Ergonomic seat
- Safety equipment
- Equipment status
- Emergency stop controls



Thruster

The hydraulic thruster is driven from the operator cabin and drives the dredge independently without any connection to the shore.



With this upgrade, the DRSP dredges achieves an extra level of independence for those particularly harsh environments. The tracked module can be added to new and existing DRSP dredges for an extra mobility boost.



Length.....10.5 m
Width.....6.4 m
Height.....3.4 m
Weight.....53 ton

DIMENSIONS

One (1) main pontoon 10.5m x 3.30 2 m x 1.1 m
with two (2) lateral pontoons 6.7 m x 1.5 x 1.1

DRAFT
0.66 m



HY85/180

Max Capacity.....[m³/h] 1000
Max Head.....[m] 60
Discharge Diameter.....DN200
Max Solid Handling.....90 m



TRANSPORT

Transportable in five containers 40'.
Assembly operations takes as short as 8-10 hours



Type.....VECO Diesel engine (265 kW/360HP)
other brands available on demand
Fuel Capacity.....1200 L
Emission Compliance.....STAGE V or lower according to the legislation of the country of application

Amphibious Dredges

Submersible Dredging Pumps | Remote Controlled Dredges
Cable Dredgers | Amphibious Dredges

DRAGFLOW



DRAGFLOW DREDGING

HY85/160

Max Capacity.....[m³/h] 1000
Max Head.....[m] 60
Discharge Diameter.....DN200
Max Solid Handling.....90 m

Hydraulic Motor

Motor Displacement:.....[cc - (cu in)]: 160 - (9.8)

Materials

Casing Spheroidal cast iron EN-GJS-800-2 (EN 1563)

Wear parts High chrome

EN-GJN-HV600 (XCr18) (EN 12513)

ACCESSORIES



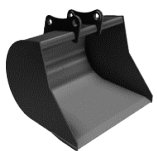
DTM Cutter Head

- Hydraulic motor Radial piston
- Capacity (l/min) 40
- Tooth system materials: harder and tougher alloy steel



Side Cutters

- Replaceable teeth
- Radial piston hydraulic motor
- Oil requirement: 35 l/min each
- Rotates in both directions



Backhoe Bucket without teeth 1000 lt

- Cap. Sae. 1000 lt
- Weight: 830 kg
- Double base in S355



Backhoe Bucket 600 lt

- N. 4 teeth type Cat J300
- Cap. Sae: 600 lt
- Weight: 580 kg
- Double base in S355



Bucket Rake

- N. 11 teeth type Cat J300
- Weight: 1200 kg
- Distance between tips: 200 mm approx



Vibro Pile-Drivers

- Min Oil Flow: 100 l/min
- Working pressure: 150 bar
- Max centrifugal force: 12000 kg
- Vibration numbers: 2300
- Weight: 1200 kg



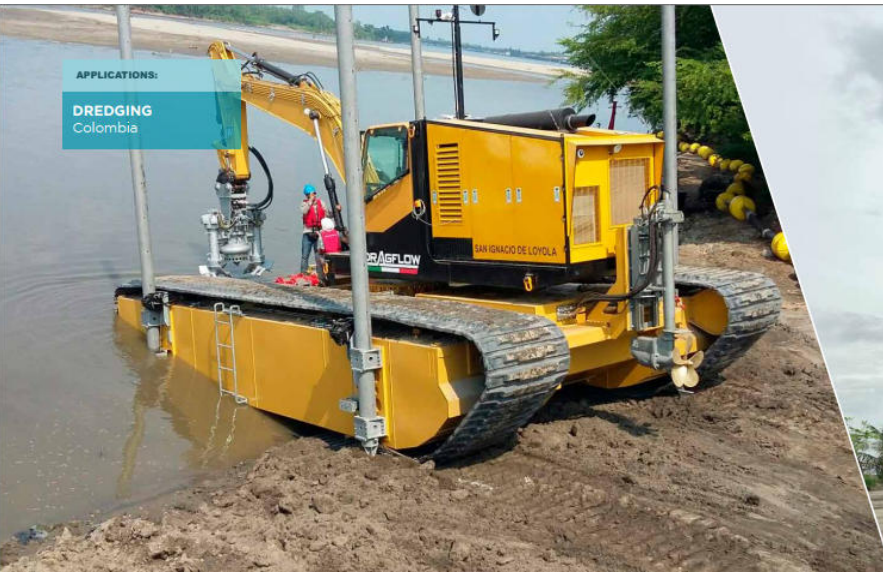
Clamshell Bucket 300 kg

- Weight: 300 kg
- Static flow: 2 ton
- Force: 1,7 ton
- Surface: 0,35 m²

Amphibious Dredges

Submersible Dredging Pumps | Remote Controlled Dredges
Cable Dredgers | Amphibious Dredges

DRAGFLOW



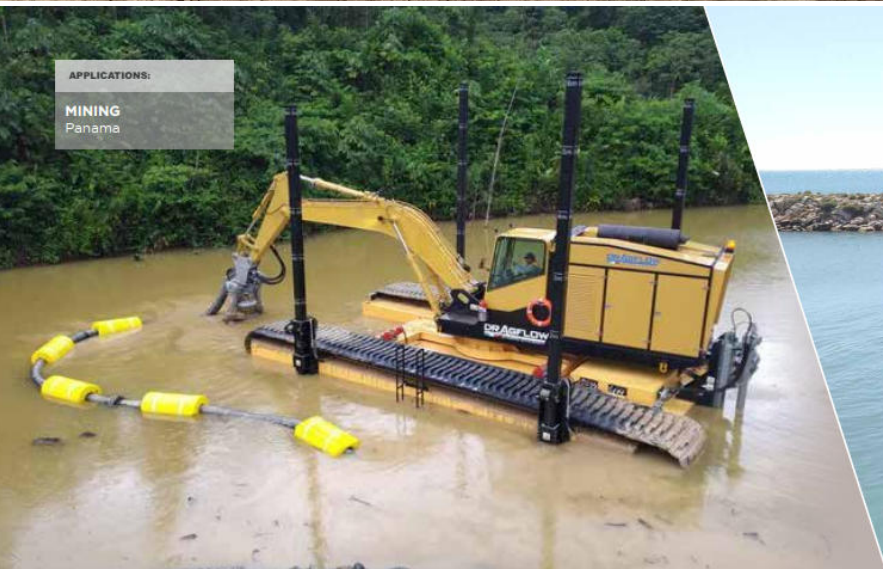
APPLICATIONS:

DREDGING
Colombia



APPLICATIONS:

DREDGING
Philippines



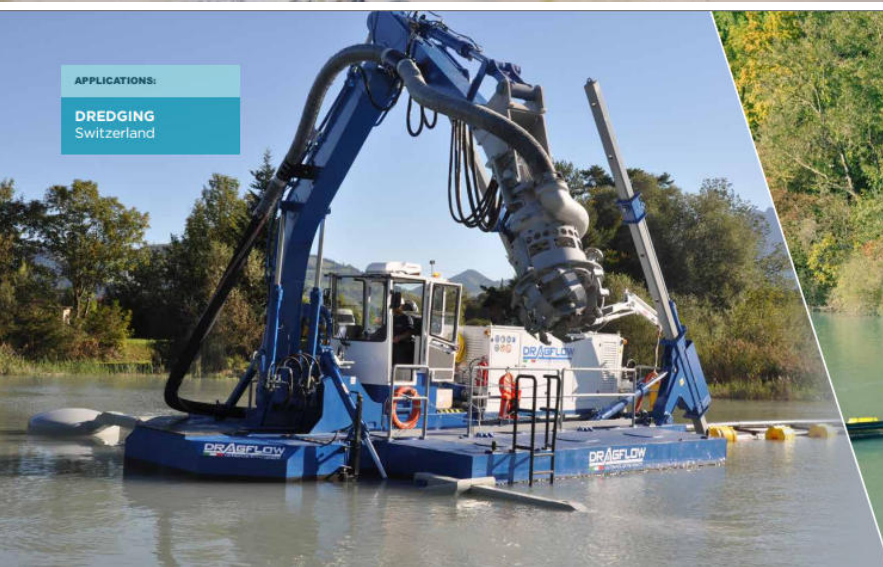
APPLICATIONS:

MINING
Panama



APPLICATIONS:

DREDGING
Tunisia



APPLICATIONS:

DREDGING
Switzerland



APPLICATIONS:

DREDGING
Switzerland